

TOPENS®

TKP3

Wireless Keypad User Manual

Product Description

Works with all TOPENS gate and door openers. Easily add the wireless keypad to your gate or door opener using the programming button on the control board. Simply enter the password to open or close the gate. Just one press of the button "OK", the moving gate will stop for quick passing through.



1 SPECIFICATIONS

Format of the Password: 6 digits

Operation Range: 10m (35 feet)

Transmission Power: $\leq 20\text{mW}$

Frequency: 433.92MHz, TOPENS Rolling Code

Power Input: 3 x AAA (1.5V) alkaline battery (incl.)

Working Temperature: $-20^{\circ}\text{C} \sim +50^{\circ}\text{C}$ (0°F to 120°F)

Dimension of the Remote Control: 92 x 80 x 40mm (3.6 x 3.1 x 1.6")

Code Capability: 1 code

Protection Class: IP44

Operating Current: $\leq 12\text{mA}$

2 WHAT'S IN THE BOX

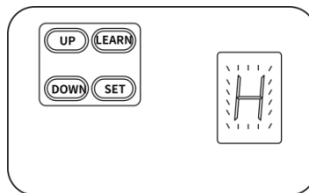
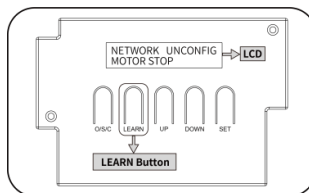
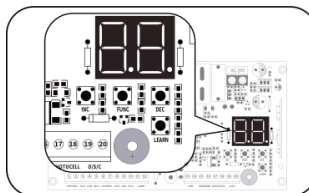
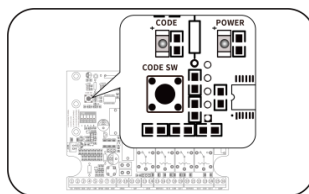
- ◆ 1 x Keypad with Three AAA Alkaline Batteries
- ◆ 3 x Backup AAA Battery

3 IMPORTANT NOTES

- ◆ The distance between the keypad and the control box of the gate or door opener should be within 10m (35 feet).
- ◆ It is suggested to install the keypad on the same side of the control board and away from any metal structure.
- ◆ The keypad should be mounted on a clean, solid & flat surface.
- ◆ For clear signal transmission, please do not put the gate or door opener's control board inside a metal box.
- ◆ Avoid use in areas with strong interference, such as signal towers, electrical substations, or confined metal spaces.

4 PROGRAM THE KEYPAD TO TOPENS GATE OR DOOR OPENER

- ◆ The programming button is located on the control board of TOPENS gate or door openers. For its exact location and the corresponding programming indicator (LED or display screen), please refer to the **Connection of Accessories** section in the Installation Manual for your specific model.
- ◆ The images on the right show only a portion of the opener's control boards for reference.
- ◆ Press and release the programming button on the control board (DO NOT HOLD THE BUTTON). The LED or the display screen will change status indicating that the gate or door opener has entered programming mode.
- ◆ Press the button “OK” on the keypad, and then the LED or the display screen will change status indicating successful programming.



Notes:

- ◆ Each button press during programming must be completed within 1 second to ensure successful programming.
- ◆ Once programmed, the keypad cannot be deleted.

5 OPERATE THE KEYPAD AND CHANGE PASSWORD

Use the Default Password to Operate

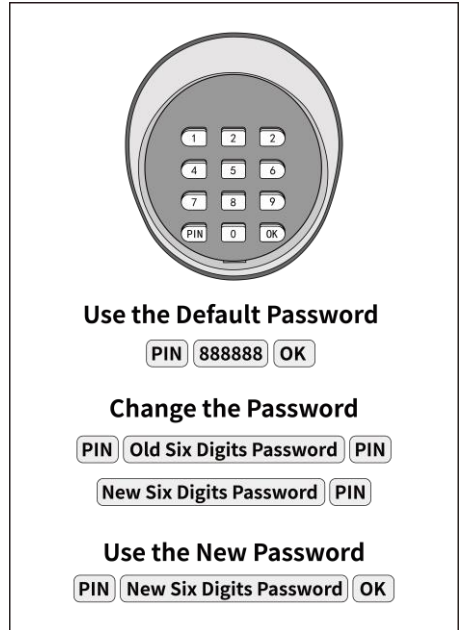
- ◆ Press “PIN” “8 8 8 8 8 8” and then press the button “OK” to operate the opener.

Change the Password

- ◆ Press “PIN” and then input the old six digits password and then press “PIN” again, the LED or the display screen will change status indicating that the gate or door opener has entered password changing mode.
- ◆ Input the new six digits password and then press the “PIN” to confirm the new setting, the LED or the display screen will change status indicating that the password has been changed successfully.

Use the New Password to Operate

- ◆ Press “PIN” “new six digits password” and then press the button “OK” to operate the opener.



Note: If you forget the password, you can reset the keypad to restore the default code “888888” by reprogramming it.

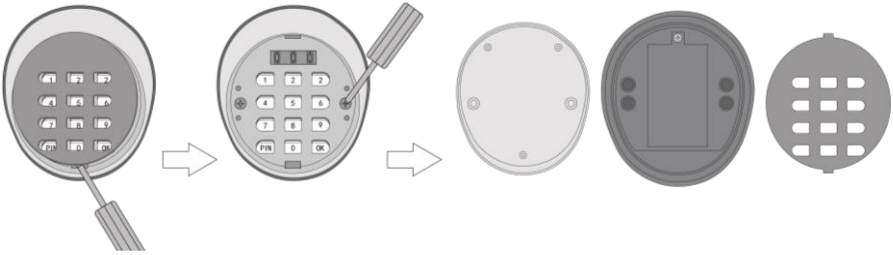
6 COMPATIBILITY WITH OTHER BRANDS GATE OR DOOR OPENER

- ◆ The keypad cannot be programmed directly to gate or door openers of other brands. It can only be used when the control board is connected to a TOPENS ERM12 External Receiver (sold separately). The control board must accept a "Normally Open Dry Contact" signal for push button. The receiver can be powered by 9-24VDC from the control board or from an external power source.

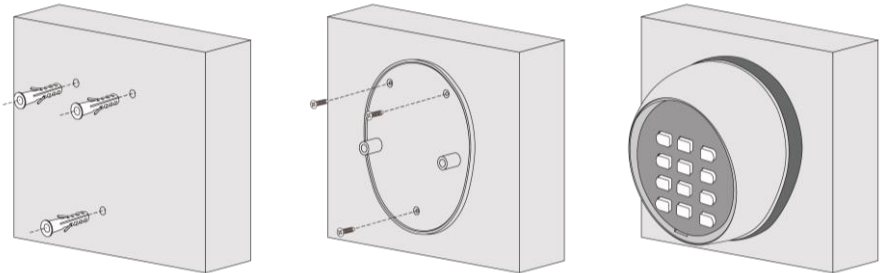
Note: The keypad does not support other door access control system.

7 INSTALL THE KEYPAD

- ◆ Choose a location outside the moving path of the gate or door.
- ◆ The distance between the keypad and the control board of the gate or door opener should be within 10m (35 feet).
- ◆ It is suggested to install the keypad on the same side of the gate or door opener control board and away from any metal structure.
- ◆ Remove the blue cover using a slotted screwdriver, then unscrew the two screws underneath the cover and detach the front panel from the mounting plate.



- ◆ Carefully use a sharp-pointed tool to pierce the holes on the mounting plate.
- ◆ Mark the mounting locations, then securely attach the plate to a wall, post, or other flat surface using the included screws.
- ◆ Attach the front panel back onto the mounting plate, tighten the screws and put the blue cover back.

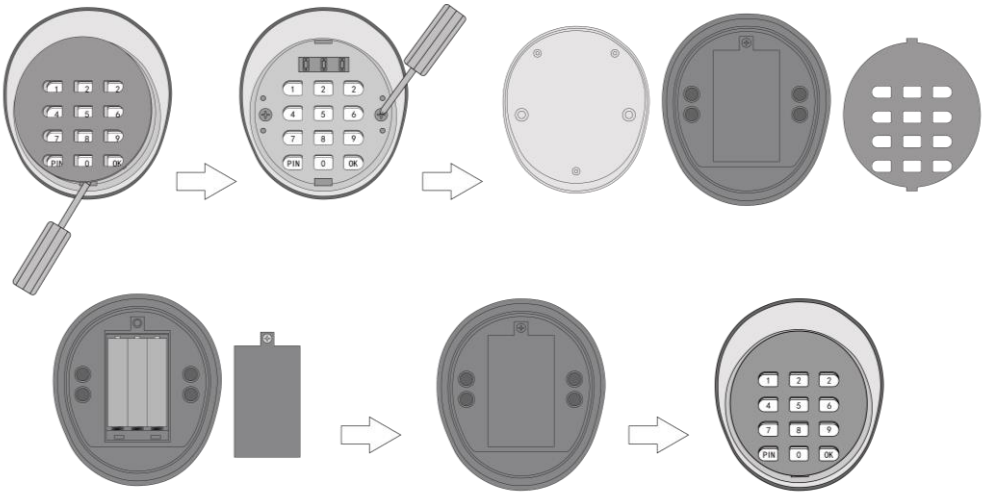


Notes:

- ◆ *If only one keypad is installed outside the property, it is recommended to enable the auto-close function by referring to the installation manual for your specific model.*
- ◆ *It is recommended to install the keypad in a waterproof environment for better protection.*

8 REPLACE THE KEYPAD BATTERY

- ◆ Remove the blue cover using a slotted screwdriver, then unscrew the two screws underneath the cover and detach the front panel from the mounting plate.
- ◆ Remove the battery cover and replace the batteries with three AAA (1.5V) alkaline batteries.
- ◆ Put the battery cover back, attach the front panel back onto the mounting plate, tighten the screws and put the blue cover back.



9 EXTEND KEYPAD CONTROL RANGE

- ◆ It is recommended to pull the antenna out of the control box, or add an ERM12 External Receiver (sold separately) to the gate or door opener control board.
- ◆ If the control range decreases significantly, the batteries may need to be replaced.

Feedback & Review

Your comments and suggestions are important to us
as they help us provide the best possible service.

Should you have any need to contact us, the info below will help you get in
touch:



TOPENS Website

www.topens.com

Contact Us:

E-mail: support@topens.com

*Kindly include your purchase channel, order #, gate information, issue
description and your contact information. All your concerns will be replied
within 24 hours.*

Tel: +1 (888) 750 9899 (Toll Free USA & Canada)