

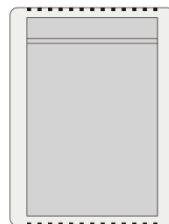
# TOPENS®

## HLR01

### HomeLink Remote Control Kit User Manual

#### Product Description

Once programmed to your vehicle's HomeLink system, you can control the gate or door opener directly from your vehicle. A single press of the HomeLink button will operate the gate or door opener.



#### 1 SPECIFICATIONS

---

**Operating Voltage:** 12-24VDC

**Operating Current:** Max. 70mA

**Modulation Mode:** ASK (AM)

**Control Range:** Max. 15m (50ft.)

**Working Temperature:** -20°C ~ +50°C (0°F to 120°F)

**Dimension of the Receiver:** 74 x 55 x 25mm (2.9 x 2.2 x 1")

**Dimension of the Remote:** 60 x 30 x 10mm (2.4 x 1.2 x 0.4")

**Remote Control Battery:** 2 x 3V Lithium Cell CR2016 Battery (Incl.)

**Output:** Relay SPDT

**Channel:** Dual Channel

**Frequency:** 315MHz

#### 2 WHAT'S IN THE BOX

---

- ◆ 1 x HomeLink Receiver
- ◆ 1 x Remote Control with Batteries

### 3 IMPORTANT NOTES

---

- ◆ Confirm your vehicle's HomeLink system is compatible with the EV1527 (315MHz) remote control code.
- ◆ Keep the wire connection between the receiver and the opener's control board under 15 meters (50 feet) to ensure stable signal transmission.
- ◆ The receiver is not waterproof, place it in a waterproof environment.
- ◆ For clear signal transmission, do not install the receiver inside a metal enclosure. Avoid use in areas with strong interference, such as signal towers, electrical substations, or confined metal spaces.

### 4 WIRE CONNECTION WITH TOPENS GATE OR DOOR OPENER

---

- ◆ Terminals **① ②** and **④ ⑤** provide “Normal Open Dry Contact” signals. Wire either pair to the gate or door opener system.
- ◆ Terminals **⑦ ⑧** are power input for 12-24VDC.
- ◆ **Button A** on the remote control is used to control the PORT1 (terminals **① ②** ), while **Button B** is used to control the PORT2 (terminals **④ ⑤** ).
- ◆ For wire connection, please refer to the connection diagram in the Installation Manual specific to your gate or door opener model.
- ◆ Make sure the power is OFF before making any wire connections.



HomeLink Receiver



Remote Control

**Note:** A 4C x 0.3 mm<sup>2</sup> (22AWG) cable is required for the wire connection, but it is NOT included.

### 5 COMPATIBILITY WITH OTHER BRANDS GATE OR DOOR OPENER

---

- ◆ Compatible with other brands gate or door opener whose control board accepts “Normal Open Dry Contact” signal for the push button.
- ◆ The receiver can be powered by the control board of the gate or door opener or by the external 12-24VDC power source.

## **6 PROGRAM THE HOMELINK SYSTEM TO THE REMOTE CONTROL**

- ◆ Turn off the power to the gate or door opener before programming.
- ◆ Clear any existing codes from your vehicle's HomeLink system to start the process fresh.
- ◆ Position the Remote Control 5~12.5cm (2~5") away from the HomeLink button.
- ◆ Select the HomeLink button you want to program. Press and hold it for approximately 20 seconds until the status light indicates it is in programming mode.
- ◆ While holding the HomeLink button, press and hold the button on the Remote Control. Press **Button A** if receiver terminals **① ②** are connected to the gate or door opener control board. Press **Button B** if receiver terminals **④ ⑤** are connected to the gate or door opener control board.
- ◆ Hold both the HomeLink and Remote Control buttons until the HomeLink system status light confirms successful programming.
- ◆ Release both buttons. The HomeLink system should now be programmed to operate the gate or door opener.
- ◆ Turn on the power and test the system. Once successfully programmed, each press of the HomeLink button should smoothly control the gate or door opener.



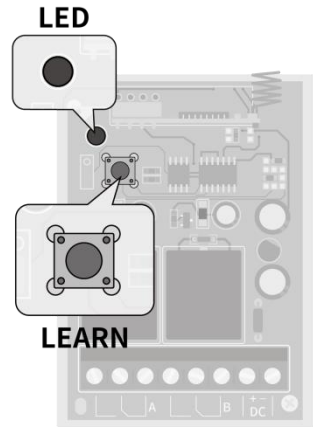
### **Notes:**

- *The remote control is pre-programmed with the receiver.*
- *The actual programming process may vary depending on the vehicle model. Please refer to the vehicle's user manual for HomeLink system programming.*

## 7 PROGRAM AND ERASE THE REMOTE CONTROL

---

- ◆ **Program a New Remote Control to the Receiver:** Press and hold the LEARN button on the receiver until the LED turns off. Release the LEARN button, then press Button A or B on the remote control. The LED will flash and then turn on, indicating that the remote has been successfully programmed.
- ◆ **Erase the Remote Control:** Press and hold the LEARN button until the LED turns from ON to OFF and then back ON again. While still holding the LEARN button, press and release Button A or B, the LED will flash and then stay ON. Release the LEARN button, and all remote controls have now been erased.



### Feedback & Review

Your comments and suggestions are important to us as they help us provide the best possible service. Should you have any need to contact us, the info below will help you get in touch:



TOPENS Website  
**[www.topens.com](http://www.topens.com)**

Contact Us:

E-mail: [support@topens.com](mailto:support@topens.com)

*Kindly include your purchase channel, order #, gate information, issue description and your contact information. All your concerns will be replied within 24 hours.*

Tel: +1 (888) 750 9899 (Toll Free USA & Canada)