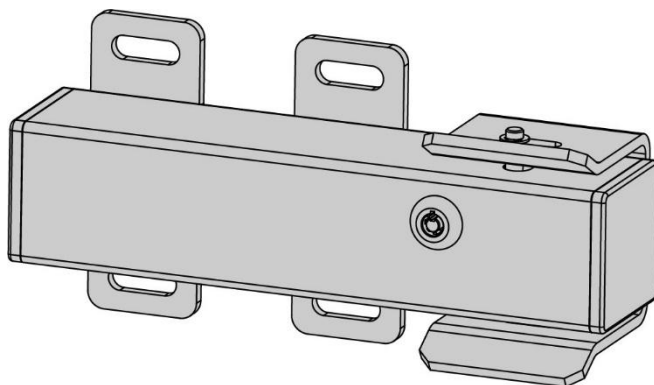




TOPENS[®]

ET24

Electric Gate Lock User Manual



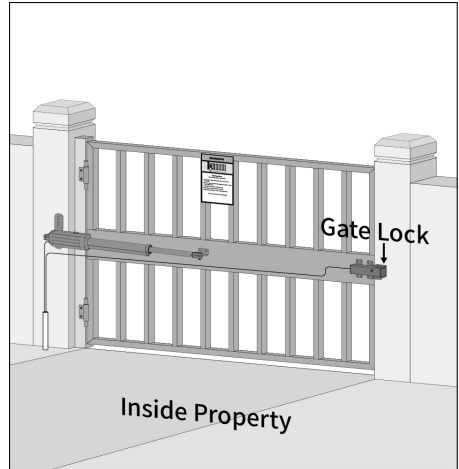
Protect What Matters Most !



Product Description

The electric gate lock is designed to provide secure and reliable locking for swing gate systems. It operates automatically with the gate opener - locking after the gate closed and unlocking before it opens - eliminating the need for manual operation.

The system includes a main lock unit, a lock receiver, and a set of keys for manual use in case of a power outage or loss of remote access.



Important Notes:

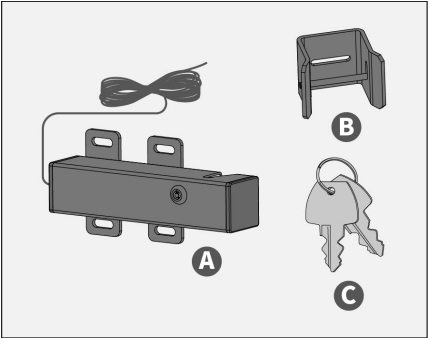
- ◆ **USAGE INSTRUCTIONS:** This electric gate lock is specifically designed to secure gates equipped with automatic openers. Do not use it for any other purpose.
- ◆ **RECOMMENDED INSTALLATION:** For gates longer than 1.5 meters (5 feet) - especially in areas prone to strong winds or where pets or livestock are present - we strongly recommend using this lock to enhance safety and prevent unintended gate movement.
- ◆ **POWER SUPPLY DISCONNECTION:** Always disconnect power to the gate before installing, servicing, or removing the electric gate lock to avoid electrical hazards.
- ◆ **SAFETY NOTICE:** Installation, maintenance, and removal of this product should be performed only by qualified individuals. Keep children, pets, and livestock away from the installation area and the product at all times.
- ◆ **MOUNTING HARDWARE NOT INCLUDED:** Due to the variety of mounting applications, this product does not include mounting hardware. Please purchase the appropriate mounting parts from your local hardware store. All other components required for installation are included.

1 PARTS LIST

A - Lock with a 5m (16.4 feet)
Power Cable

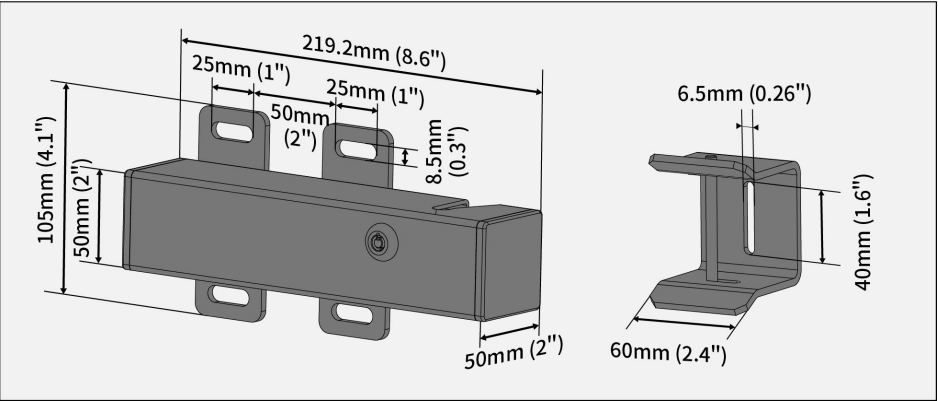
B - Lock Receiver

C - Lock Keys (for Manual Release)



2 SPEFICATIONS AND DIMENSIONS

Rated Voltage	24VDC \pm 1V
Operating Current	2.5A
Pulse to Open Lock	3 Sec
Working Temperature	-20°C ~ +50°C (0°F to 120°F)
Protection Class	IP44



3 BEFORE YOU BEGIN

- ◆ Before installing the electric gate lock, ensure that the gate is level, moves freely on its hinges, and does not bind or drag against the ground.
- ◆ Verify the smooth operation of the lock tongue using the lock key, ensuring that the receiver pin inserts easily into the lock slot.
- ◆ For dual swing gate openers, set the open & close delay time of both actuators to at least 4 seconds to ensure proper operation.

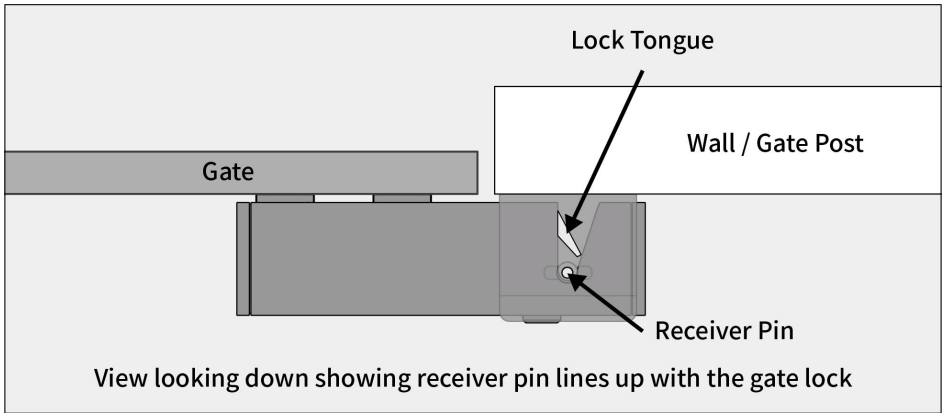
4 INSTALLING THE GATE LOCK

- ◆ The electric gate lock is compatible with both single and dual gate systems. Refer to the appropriate installation instructions based on your specific configuration - Single Gate or Dual Gates.
- ◆ Mounting hardware is not included. Review the installation examples below to select the appropriate hardware for your application. The lock supports hardware up to 8mm (5/16") in diameter, and the receiver up to 6mm (1/4").
- ◆ For most iron or aluminum tube gates, use bolts, lock washers, and nuts to secure the gate lock. Welding the components directly to the gate is also an option.
- ◆ For most chain link gates, use U-bolts, saddles, lock washers and nuts for secure installation.
- ◆ For Pull-to-Open installations, adjust Limit Switch B slightly outward. For Push-to-Open installations, adjust the gate bracket slightly outward. This allows the gate to close just beyond the desired closed position, ensuring secure engagement between the lock and receiver for proper locking.

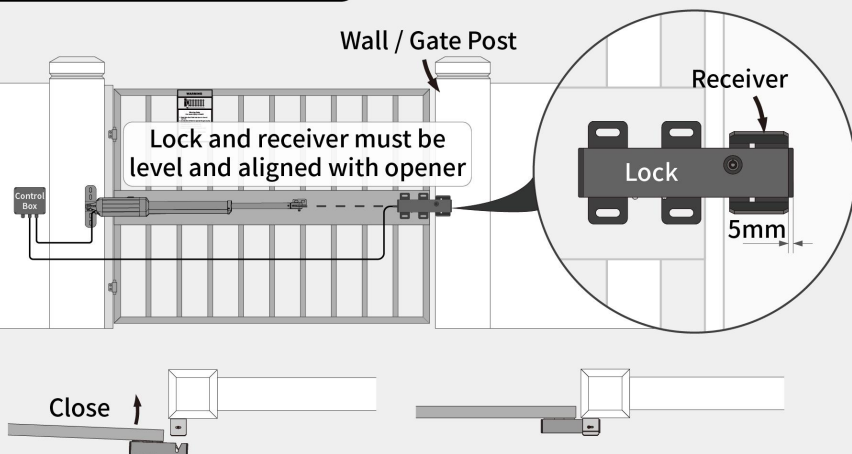
Single Gate Installation

Note: For a single gate operating in Pull-to-Open mode, install the lock on the gate and the receiver on the wall or gate post. For Push-to-Open mode, install the lock on the wall or gate post and the receiver on the gate.

STEP 1:	Turn off the power supply to the gate opener before starting the installation.
STEP 2:	Disengage the clutch of the gate opener using the manual release key to enable manual swinging of the gate during lock installation.
STEP 3:	With the gate in the fully closed position, determine the best location for the lock and lock receiver. The lock should be mounted on the gate cross member or other solid surface to provide stability.
STEP 4:	With the receiver pin inserted into the lock slot, clamp the lock and receiver together against the gate. Confirm that both components are perfectly level and properly aligned with the gate opener.
STEP 5:	Secure the lock and receiver using appropriate screws or by welding them in place.
STEP 6:	Manually open and close the gate to verify that the lock and receiver are correctly aligned and positioned, and that the lock tongue does not make contact with the receiver when fully engaged.

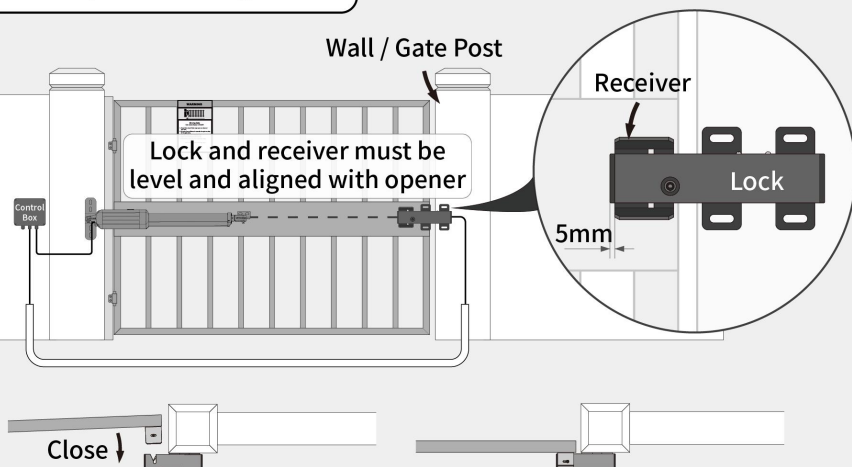


Pull to Open for Single Gate



Lock and receiver must fit close. Check it when the gate closes firmly.

Push to Open for Single Gate



Lock and receiver must fit close. Check it when the gate closes firmly.

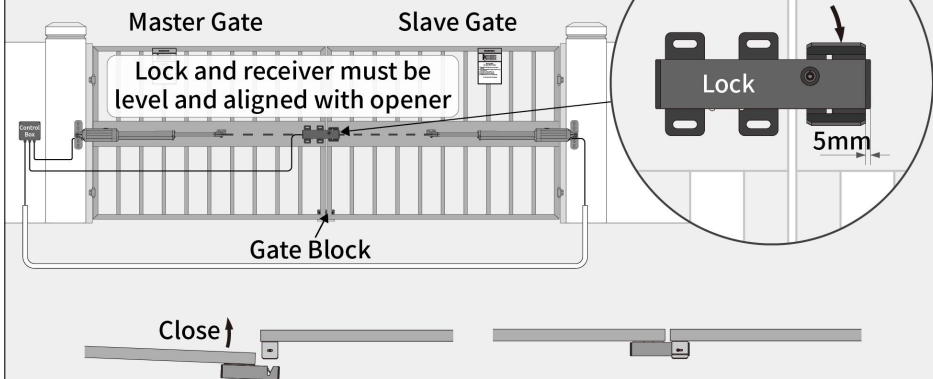
Dual Gate Installation

Notes:

- ◆ *In a dual gate installation, the gate equipped with the Master Arm is referred to as the Master Gate, while the gate with the Slave Arm is referred to as the Slave Gate. The master gate opens first and closes last.*
- ◆ *For dual gates operating in Pull-to-Open mode, install the lock on the master gate and the receiver on the slave gate. For Push-to-Open mode, install the lock on the slave gate and the receiver on the master gate.*
- ◆ *The open & close delay time between the master and slave arms **MUST** be set to more than 4 seconds.*
- ◆ *Positive stops are required in dual gate applications where the gates are unstable in the closed position or difficult to lock securely. Install the positive stop on the outside of the gate for Pull-to-Open installations and on the inside for Push-to-Open installations.*

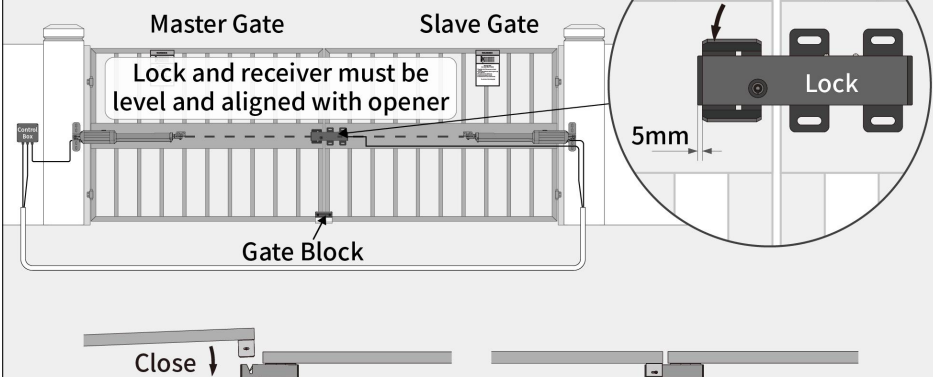
STEP 1:	Turn off the power supply to the gate openers before starting the installation.
STEP 2:	Disengage the clutches of the gate openers using the manual release key to enable manual swinging of the gates during lock installation.
STEP 3:	With the gates in the fully closed position, determine the best location for the lock and lock receiver. The lock should be mounted on the gate cross member or other solid surface to provide stability.
STEP 4:	With the receiver pin inserted into the lock slot, clamp the lock and receiver together against the gates. Confirm that both components are perfectly level and properly aligned with the gate openers.
STEP 5:	Secure the lock and receiver using appropriate screws or by welding them in place.
STEP 6:	Manually open and close the gate to verify that the lock and receiver are correctly aligned and positioned, and that the lock tongue does not make contact with the receiver when fully engaged.

Pull to Open for Dual Gate



Lock and receiver must fit close. Check it when the gate closes firmly.

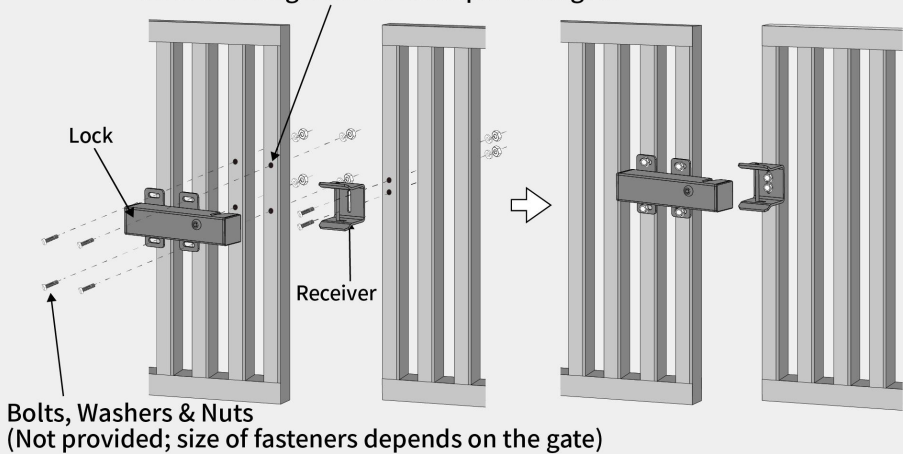
Push to Open for Dual Gate



Lock and receiver must fit close. Check it when the gate closes firmly.

Iron or Aluminum Tube Fence and Gate Installation

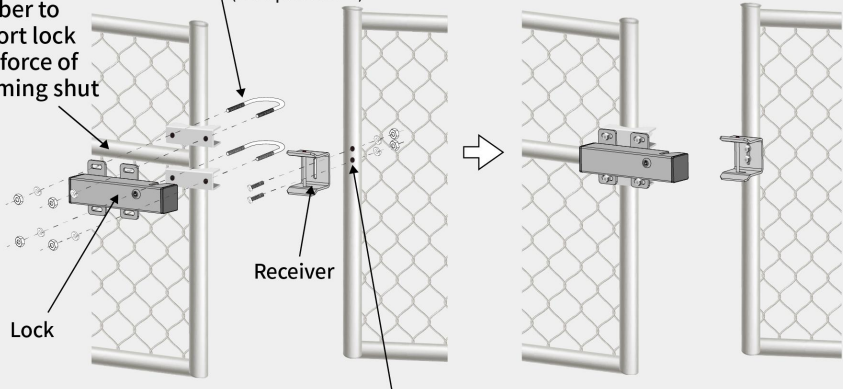
Remember to check the alignment and mark positions before drilling holes in fence post and gate



Chain Link Fence and Gate Installation

Added cross member to support lock from force of slamming shut

U-bolts, Saddles, Washers & Nuts
(Not provided)

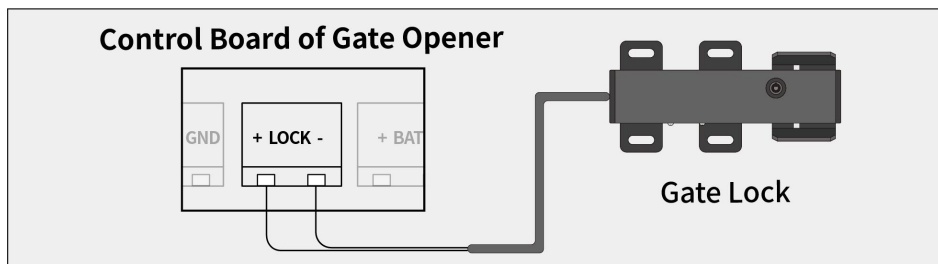


Remember to check the alignment and mark positions before drilling holes in fence post

(Examples of Gate Lock Mounting for Pull-to-Open Installations)

5 WIRING THE GATE LOCK

Connect the lock's power cables directly to the "LOCK" terminal on the control board of your TOPENS swing gate opener, disregarding wire polarity.



Notes:

- ◆ *The distance between the gate lock and the control board should not exceed 15m (50 feet), as greater distances may affect gate operation. If an extension is required, use 2C x 0.75mm² (18AWG) wire.*
- ◆ *Ensure the clutch is engaged before activating the opener with the Manual Release Key.*

Feedback & Review

Your comments and suggestions are important to us
as they help us provide the best possible service.

Should you have any need to contact us, the info below will help you
get in touch:



TOPENS Website

www.topens.com

Contact Us:

E-mail: support@topens.com

Kindly include your purchase channel, order #, gate information, issue description and your contact information. All your concerns will be replied within 24 hours.

Tel: +1 (888) 750 9899 (Toll Free USA & Canada)